

A/C UNIT DISASSEMBLY/ASSEMBLY [MANUAL AIR CONDITIONER]

B3E071161130W03

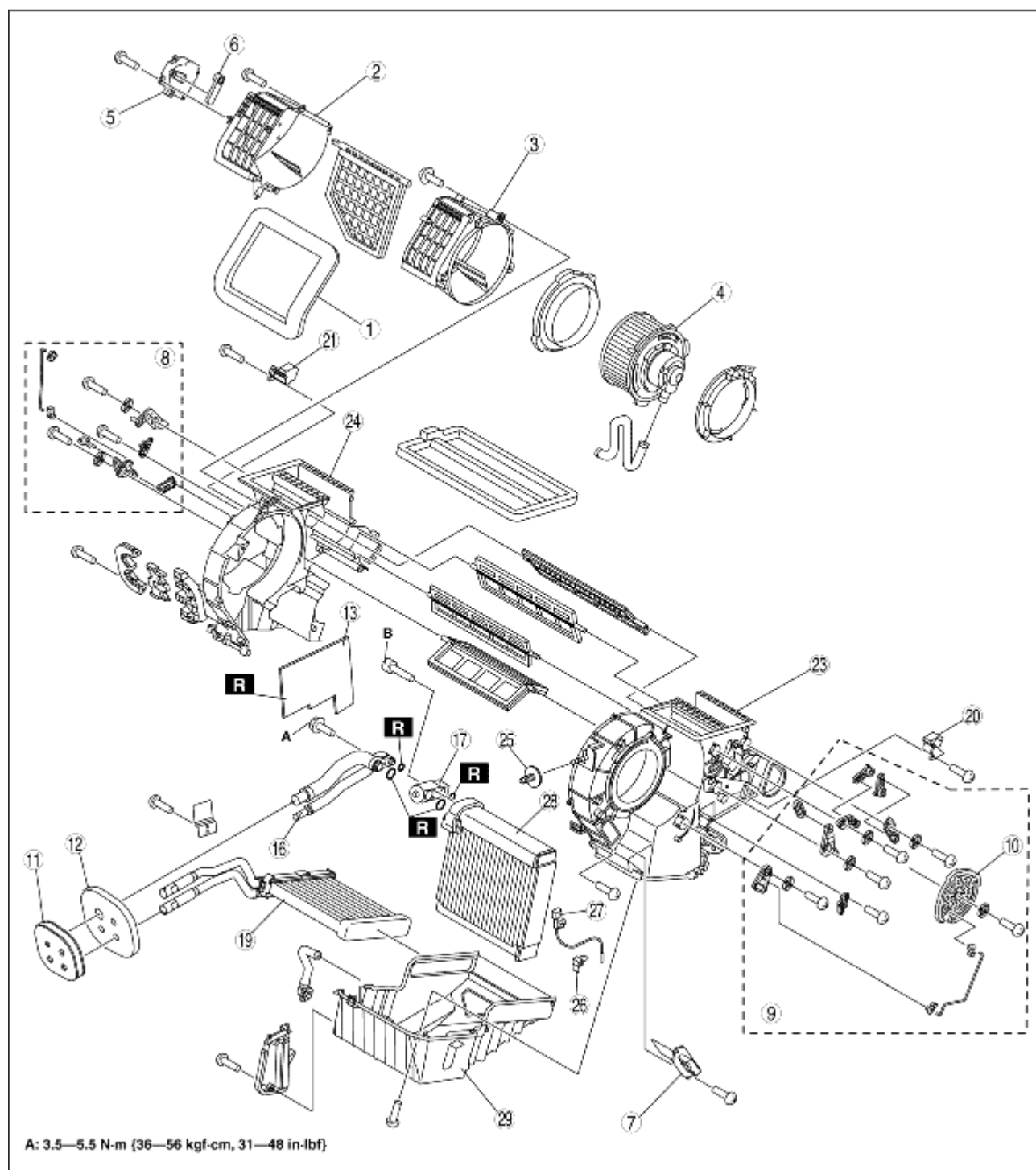
1. Disassemble in the order indicated in the table.

Caution

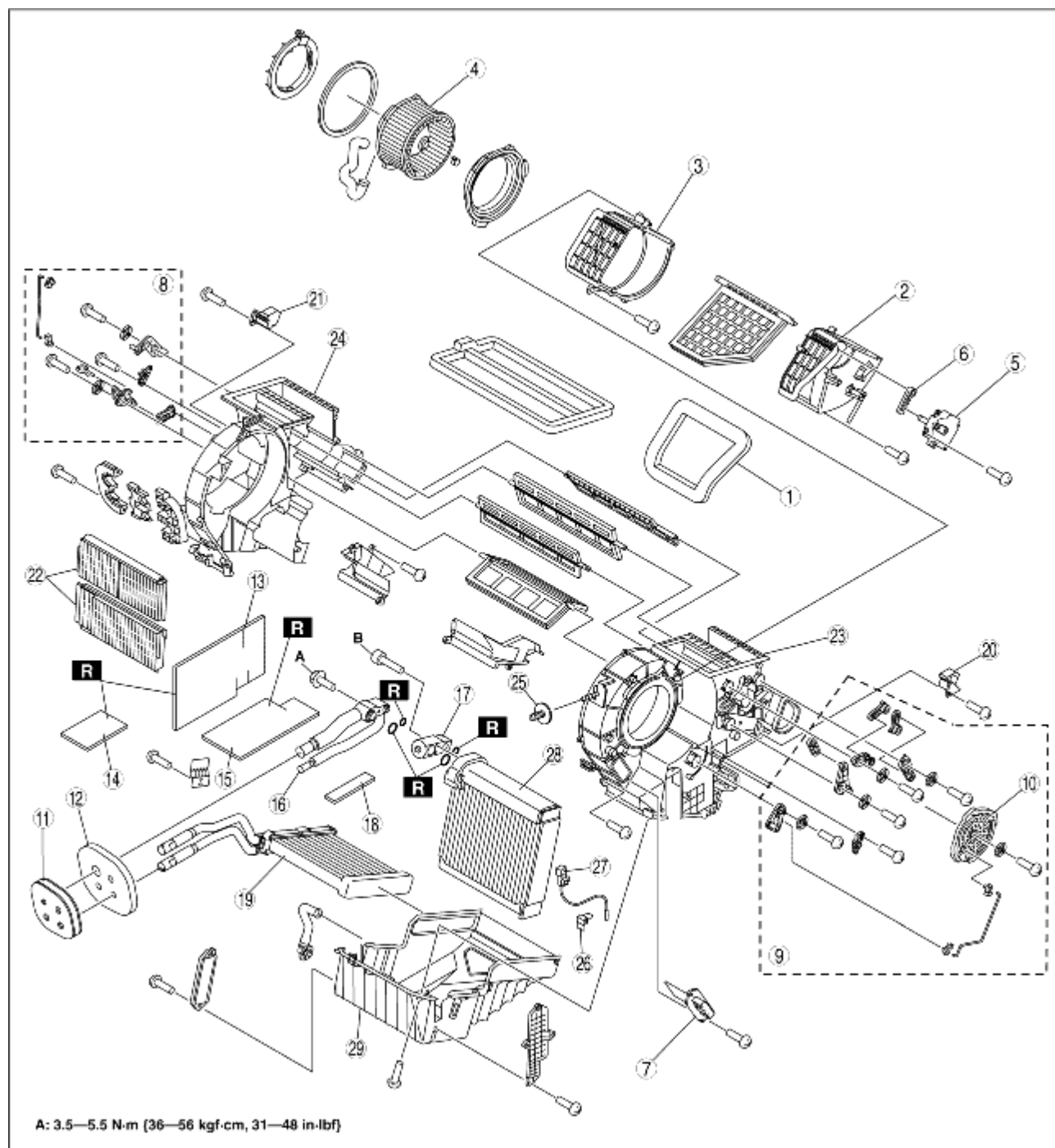
- If a non-specified grease is used, it may result in abnormal noise or improper operation of the links. Apply only the specified grease to each link.

2. Assemble in the reverse order of disassembly.

L.H.D.



R.H.D.



B3E0711W432

1	Adhesive polyurethane (1)
2	Blower case (1)
3	Blower case (2)
4	Blower motor (See BLOWER MOTOR REMOVAL.) (See BLOWER MOTOR INSTALLATION.)
5	Air intake actuator
6	Air intake link set
7	Resistor
8	Air mix link set

9	Airflow mode link set
10	Airflow mode main link
11	Polyurethane foam
12	Adhesive polyurethane (2)
13	Adhesive polyurethane (3)
14	Adhesive polyurethane (4) (R.H.D.)
15	Adhesive polyurethane (5) (R.H.D.)
16	Evaporator pipe
17	Expansion valve
18	Adhesive polyurethane (6) (R.H.D.)
19	Heater core
20	Bracket (1)
21	Bracket (2)
22	Air filter
23	A/C case (1)
24	A/C case (2)
25	Bolt (See Bolt Assembly Note.)
26	Sensor clamp (See Sensor Clamp Assembly Note.)
27	Evaporator temperature sensor (See Evaporator Temperature Sensor Assembly Note.)
28	Evaporator
29	A/C case (3)

Bolt Assembly Note

1. Tighten it to the right so that it is flush to the contact surface.

